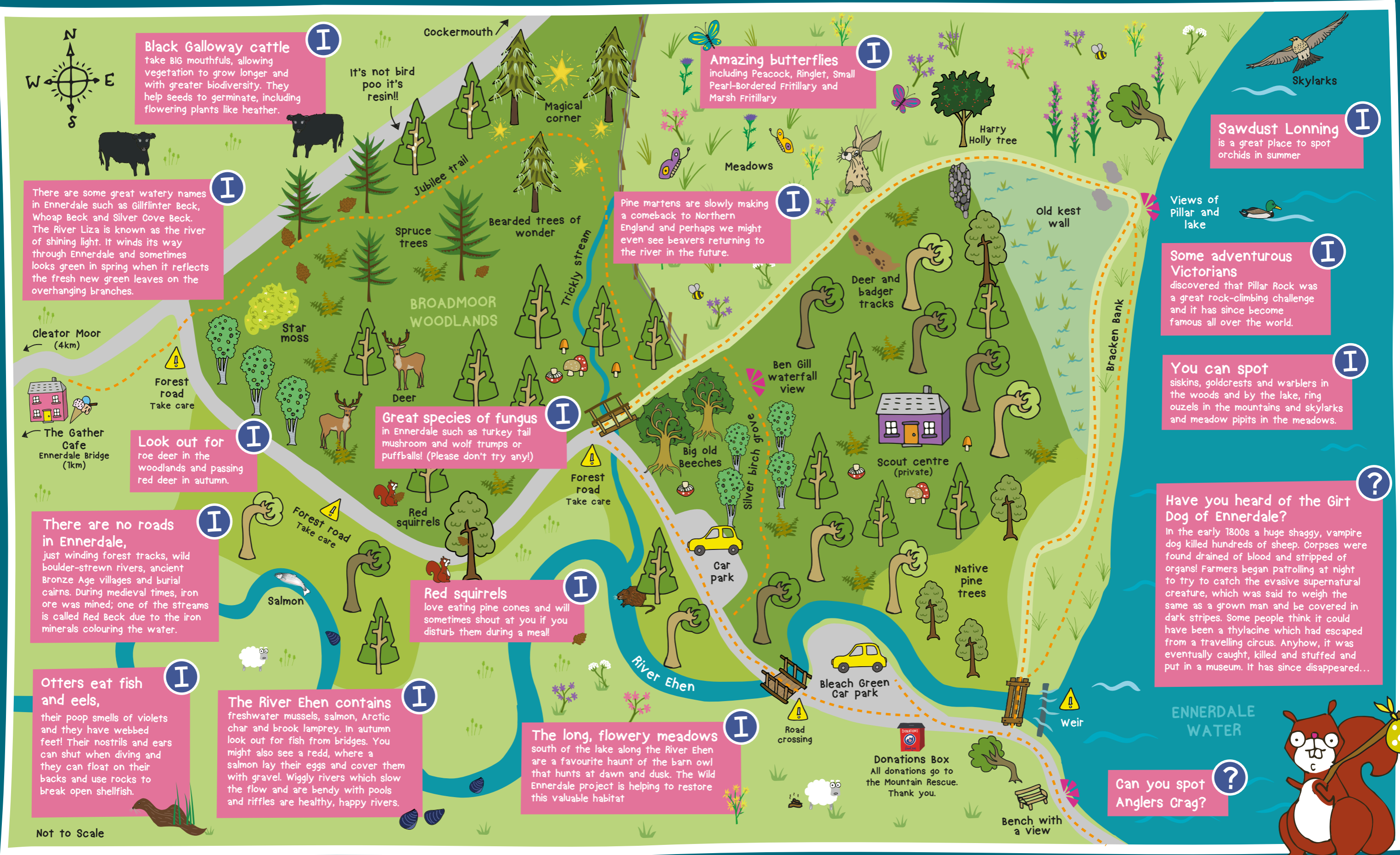


The Wonderful Wildlife of Wild Ennerdale



Black Galloway cattle take BIG mouthfuls, allowing vegetation to grow longer and with greater biodiversity. They help seeds to germinate, including flowering plants like heather.

Amazing butterflies including Peacock, Ringlet, Small Pearl-bordered Fritillary and Marsh Fritillary

Sawdust Lonning is a great place to spot orchids in summer

There are some great watery names in Ennerdale such as Gillflinter Beck, Whoop Beck and Silver Cove Beck. The River Liza is known as the river of shining light. It winds its way through Ennerdale and sometimes looks green in spring when it reflects the fresh new green leaves on the overhanging branches.

Pine martens are slowly making a comeback to Northern England and perhaps we might even see beavers returning to the river in the future.

Some adventurous Victorians discovered that Pillar Rock was a great rock-climbing challenge and it has since become famous all over the world.

Look out for roe deer in the woodlands and passing red deer in autumn.

Great species of fungus in Ennerdale such as turkey tail mushroom and wolf trumps or puffballs! (Please don't try any!)

You can spot siskins, goldcrests and warblers in the woods and by the lake, ring ouzels in the mountains and skylarks and meadow pipits in the meadows.

There are no roads in Ennerdale, just winding forest tracks, wild boulder-strewn rivers, ancient Bronze Age villages and burial cairns. During medieval times, iron ore was mined; one of the streams is called Red Beck due to the iron minerals colouring the water.

Red squirrels love eating pine cones and will sometimes shout at you if you disturb them during a meal!

Have you heard of the Girt Dog of Ennerdale? In the early 1800s a huge shaggy, vampire dog killed hundreds of sheep. Corpses were found drained of blood and stripped of organs! Farmers began patrolling at night to try to catch the evasive supernatural creature, which was said to weigh the same as a grown man and be covered in dark stripes. Some people think it could have been a thylacine which had escaped from a travelling circus. Anyhow, it was eventually caught, killed and stuffed and put in a museum. It has since disappeared...

Otters eat fish and eels, their poop smells of violets and they have webbed feet! Their nostrils and ears can shut when diving and they can float on their backs and use rocks to break open shellfish.

The River Ehen contains freshwater mussels, salmon, Arctic char and brook lamprey. In autumn look out for fish from bridges. You might also see a redd, where a salmon lay their eggs and cover them with gravel. Wiggly rivers which slow the flow and are bendy with pools and riffles are healthy, happy rivers.

The long, flowery meadows south of the lake along the River Ehen are a favourite haunt of the barn owl that hunts at dawn and dusk. The Wild Ennerdale project is helping to restore this valuable habitat

Can you spot Anglers Crag?

Not to Scale

Trail Safety Information
This Tale Trail explores the woodland trails around Broadmoor woodlands and Ennerdale Water, including the new Jubilee Trail and the link path to Ennerdale Bridge village. The terrain is a mixture of quiet roads, forest tracks and well-marked footpaths. There is deep open water, fast-flowing rivers and some rocky ground near to the trails, so please stick to the main pathways. The majority of the trails are pram and tramper friendly.
Copyright ©Copeland Borough Council 2023

Discover more at
www.taletrails.co.uk
www.westernlakedistrict.com/
www.visitlakedistrict.com/explore/areas-of-cumbria/western-lakes
Map illustration by Custard Graphic Design www.custard-graphic-design.co.uk
Squirrel illustrations with thanks to www.lisailustrates.co.uk

